

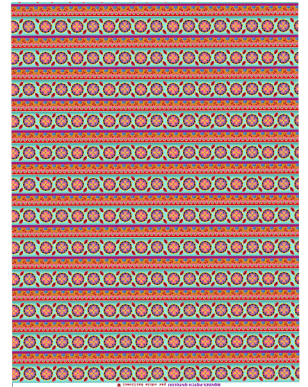
For the ALHAMBRA Patch



3 Shawl panel
45 x55cm



Andalusian Patchwork
150 x140cm



«galons pour
patch alhambra»
70 x 55 cm

Cut a 140x140 square from the "Andalusian patchwork".

Cut 4 triangles from the "shawl" panels (2 from each of 2 panels)

Edge them with a strip of Andalusian ribbons and apply them to the corners of your patchwork panel.

Cut the central motif of the last "shawl" panel into a diamond shape, and edge it with strips of "Andalusian ribbons".

Iron a small edge around it and hand-stitch to the center of the panel.

Line with a thin wadding and matching fabric ("parakeets and peonies in red" for example).

Quilt following the "Andalusian patchwork" squares.